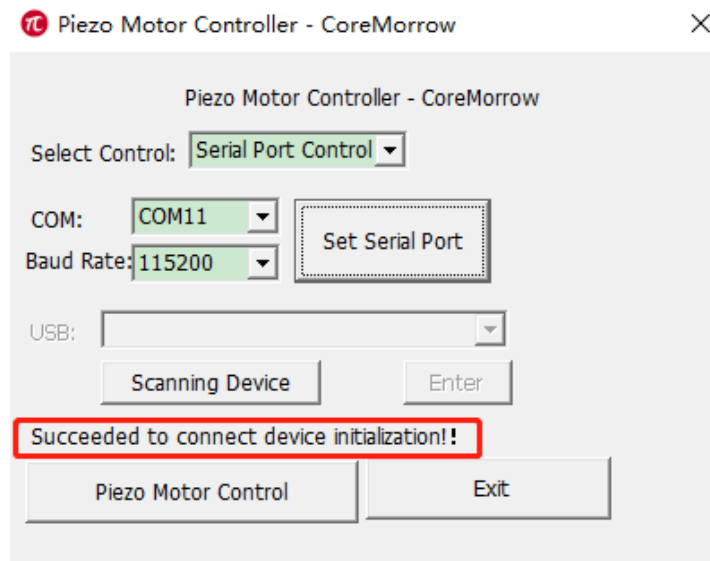


# E53.C1K-K/E53.C4K Piezo Motor Controller Software

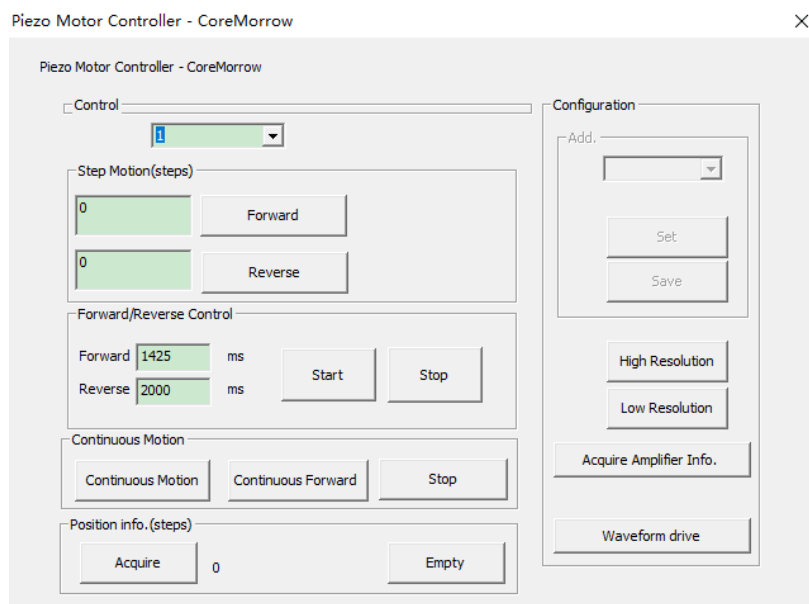
## User Guide

### 1. Select Control Mode >>

- (1) Select the corresponding serial port.
- (2) Click "Set Serial Port".
- (3) Click "Piezo Motor Control".



### 2. Display Interface >>



▷ **Control**

Select channel No., there 4 channels could be selected, and it could be operated one channel at a time.

▷ **Step motion(steps)**

In the current position, relative forward motion or reverse motion could be chosen. In the moving cycle, the channel position information could be obtained. Click "Forward", the piezo linear actuator will move in one direction, and the reverse motion will move in a relatively positive direction. Adjust it according to the actual application.

▷ **High Resolution**

Used for tiny steps. Low resolution: usde for quick movement. High resolution and low resolution, the two are relatively theory.

▷ **Continuous Motion**

Continuous forward means moving until the maximum position of piezo actuator positive, or click "Stop" button at a certain point of time to stop the movement.

Continuous reverse and continuous positive opposite directions, control and motion stop are similar.

▷ **Position Info.**

Click "Acquire", it will display the value of the current control channel recorded by the piezo controller.

Click "Empty" to clear the value of the current control channel by the controller.

▷ **Foward/Reverse Control**

Fill in the running time, then click "Start", the piezo actuator reciprocating motion for specified time. Click "Stop" to stop the movement.

▷ **Acquire Amplifier Info.**

Reading the piezo controller version information.

### **3.Exit System >>**

---

Complete the operation and exit the system.



## 7.Zero Calibration >>

---

It indicates that piezo motor finds the absolute zero position of grating ruler, and returns to the absolute position before calibration after finding it.

## 8.Return Zero >>

---

It indicate that piezo motor returns to zero position, which is generally consistent with absolute zero position of grating ruler.

## 9.Set >>

---

Click "Set" button to pop up the device information window.

